



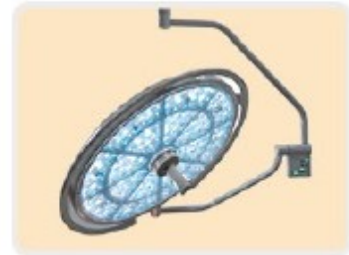
AGS-Medical

Ph: 505-550-6501 & 505-565-5102, Fx: 505-814-5778

Em: sales@agsmedical.com, Web://www.agsmedical.com

OR & ICU SOLUTIONS

Surgery Room Furniture



EOT-H

Electric operation table



Double controller

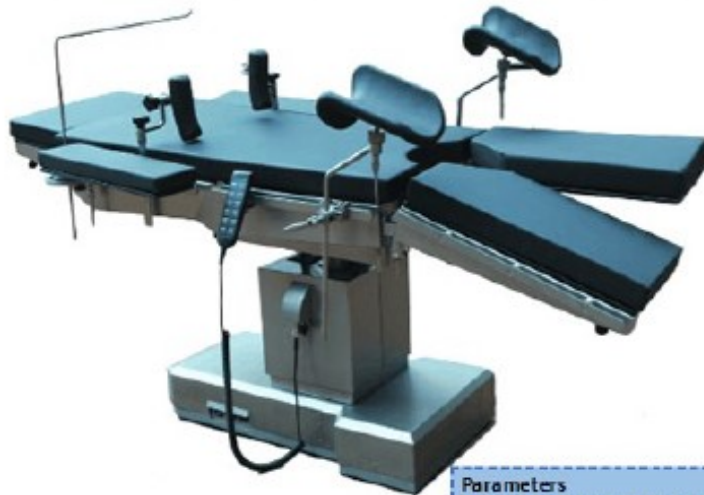


Braking



Best stainless steel

Technical Parameters		Beck section up	70°
Total length(with additional footplate)	2220mm	Beck section down	22°
Total width (without side rail)	555mm	Trendelenburg	24°
	600mm(with side rail)	Re-trendelenburg	24°
Head section length	300mm	Lateral tilt	22°
Beck section length	380mm	Leg section adjustment	Up 15° Down 90°
Main section length	540mm	Spread angle of leg plates	200°
Leg section length	580mm	Head section adjustment	Up 40° Down 90°
Supporting bottom size	1080x650x200mm	N.W. Of overall table	280kgs
Castor size	125mm	Max loading weight	320kgs
Height adjustment range	700~1000mm	Patient Horizontal max loading weight	300kgs
Kidney bridge rise	≧110mm	Integrated battery	Yes,for over 150 movements
Sliding movement	350mm		
Voltage	220V 50HZ or 110V,60HZ for choice		



EOT-M

Electric operation table

Parameters	Item No.: EOT-M
Table size:	2100x550 mm
Height adjustable range:	550~850 mm
Trendelenburg & reversed trendelenburg:	≥20° & ≥20°
Lateral tilt:	left ≥15° & right ≥15°
Table surface sliding range:	200mm
Head Section adjustable range:	up ≥35° & down ≥90°
Back Section adjustable range:	up ≥75° & down ≥15°
Leg Section adjustable range:	down ≥90°
Power supply:	220V 50Hz
Wood carton packing volume:	2000x790x790mm
G.W.:	280KGS



EOT-E

Electric operation table

Parameters	Item No.: EOT-E
Table size:	2100x500 mm
Height adjustable range:	750~1000 mm
Trendelenburg & reversed trendelenburg:	≥22° & ≥22°
Lateral tilt:	left ≥15° & right ≥15°
Table surface sliding range:	400mm
Head Section adjustable range:	up ≥45° & down ≥90°
Back Section adjustable range:	up ≥45°
Leg Section adjustable range:	up ≥45° & down ≥90°
Kidney bridge elevation:	≥120mm
Power supply:	220V 50Hz
Wood carton packing volume:	1220x650x950mm
G.W.:	255KGS



EHOT-H

Electro hydraulic operation table

Parameters	Item No.: EHOT-H
Table size:	2060x520mm
Height adjustable range:	650°950mm
Trendelenburg & reversed trendelenburg:	≥15° & ≥20°
Lateral tilt:	left ≥15° & right ≥15°
Head Section adjustable range:	up ≥40° & down ≥90° (p.s.:detachable)
Back Section adjustable range:	up ≥70° & down ≥40°
Leg Section adjustable range:	up ≥15° & down ≥90° (p.s.:detachable)
foot plate:	down ≥90° unfold:180° (p.s.:detachable)
shoulder board:	± 25°
Power supply:	220V 50Hz
Wood carton packing volume:	2000x790x790mm
G.W.:	350KGS



EHOT-M

Electro hydraulic operation table

Parameters	Item No.: EHOT-M
Table size:	2015x540mm
Height adjustable range:	650°1000mm
Table surface Sliding range:	350mm
Trendelenburg & reversed trendelenburg:	≥25° ± 2° & ≥25° ± 2°
Lateral tilt:	left ≥22° ± 2° & right ≥22° ± 2°
Head Section adjustable range:	up:30° ± 2° & down:90° ± 5° (p.s.:detachable)
Back Section adjustable range:	up ≥70° ± 2° & down ≥32° ± 2°
Leg Section adjustable range:	up ≥28° ± 2° & down ≥90° ± 5° (p.s.:detachable)
Table Panel X-ray Attenuation Coefficient	≤0.76mmAL
Power supply:	220V 50Hz
Wood carton packing volume:	1430x750x1175mm
G.W.:	240KGS
Bedboard material	Carbon fiber



EHOT-E

Electro hydraulic operation table

Parameters	Item No.: EHOT-E
Table size:	1960x480mm
Height adjustable range:	690~930mm
Trendelenburg & reversed trendelenburg:	$\geq 20^\circ$ & $\geq 25^\circ$
Lateral tilt:	left $\geq 18^\circ$ & right $\geq 18^\circ$
Head Section adjustable range:	up: 45° & down: 50° (p.s.: detachable)
Back Section adjustable range:	up: 75° & down: 10°
Leg Section adjustable range:	down: 90° (p.s.: detachable)
Kidney bridge elevation:	≥ 80 mm
Power supply:	220V 50Hz
Wood carton packing volume:	1750x750x900mm
G.W.:	270KGS



HOT-H

Hydraulic operation table

Parameters	Item No.: HOT-H
Table size:	1960x480mm
Height adjustable range:	690~930mm
Trendelenburg & reversed trendelenburg:	$\geq 20^\circ$ & $\geq 25^\circ$
Lateral tilt:	left $\geq 18^\circ$ & right $\geq 18^\circ$
Head Section adjustable range:	up: 45° & down: 50° (p.s.: detachable)
Back Section adjustable range:	up: 75° & down: 10°
Leg Section adjustable range:	down: 90° (p.s.: detachable)
Kidney bridge elevation:	≥ 80 mm
Power supply:	220V 50Hz
Wood carton packing volume:	1750x750x900mm
G.W.:	295KGS

HOT-M

Hydraulic operation table



Parameters	Item No.: HOT-M
Table size:	2100x480mm
Height adjustable range:	800~1045mm
Trendelenburg & reversed trendelenburg:	$\geq 35^\circ$ & $\geq 55^\circ$
Lateral tilt:	left $\geq 25^\circ$ & right $\geq 25^\circ$
Head Section adjustable range:	up: 90° & down: 90° (p.s.: detachable)
Back Section adjustable range:	up: 85° & down: 10°
Leg Section adjustable range:	down: 90° (p.s.: detachable)
Kidney bridge elevation:	≥ 120 mm
Power supply:	220V 50Hz
Wood carton packing volume:	1220x750x1000mm
G.W.:	260KGS

HOT-E

Hydraulic operation table



Parameters	Item No.: HOT-M
Table size:	2100x480mm
Height adjustable range:	800~1045mm
Trendelenburg & reversed trendelenburg:	$\geq 35^\circ$ & $\geq 55^\circ$
Lateral tilt:	left $\geq 25^\circ$ & right $\geq 25^\circ$
Head Section adjustable range:	up: 90° & down: 90° (p.s.: detachable)
Back Section adjustable range:	up: 85° & down: 10°
Leg Section adjustable range:	down: 90° (p.s.: detachable)
Kidney bridge elevation:	≥ 120 mm
Power supply:	220V 50Hz
Wood carton packing volume:	1220x750x1000mm
G.W.:	260KGS

GOT-M1

Electric obstetrics bed



PARAMETERS:	
Size:	2000x800x680/980mm
Range of height:	680mm~980mm
Operating:	electrical
Back Section:	>60°
Handrail up&down movement	360mm
Trendelenburg /Reversed trendelenburg	forward =5° backward =8°
Power supply	220V 50Hz
Mattress:	Leather and foam
Standard Accessories	
IV stand 1pcs Hand controller 1pcs	Knee crutch 1 pair
Handrail 1pair	Wast bowl 1pcs
Optional CD player	

GOT-M2

Electric obstetrics table



PARAMETERS:	
Size:	1850mm×600mm
Range of height:	650mm~900mm
Operating:	electrical
Back Section:	6°~75°
Controller	1 pcs
Trendelenburg /Reversed trendelenburg	forward =20° backward =15°
Power supply	220V 50Hz
Mattress:	Leather and foam
Standard Accessories	
Arm support 1pair	Knee crutch 1pair
Handrail 1pair	Wast bowl 1pc

GOT-E1

Electric obstetrics operation table


PARAMETERS:

Size:	1400mm*580mm
Range of height:	580mm-980mm
Backboard up:	>65°
Mattress:	PU foam
Backboard:	up>75° down<6°
Reversed trendelenburg	82°-180°
Trendelenburg	45°
Hand controller and foot controller	

GOT-E2

Hydraulic obstetrics operation table


PARAMETERS:

Size:	1800mm*600mm
Range of height:	650mm-895mm
Backboard:	600mm*800mm
seat rest	600mm*400mm
Leg rest	540mm*500mm
Mattress:	PU foam
Backboard:	up>75° down<6°
Trendelenburg /Reversed trendelenburg	for ward>10° backward>25°
Standard Accessories	
Arm support 1pair	Knee crutch 1pair
Handrail 1pair	Wast bowl 1pc

ET-1

Obstetrics examination bed



PARAMETERS:	
Size:	1870*600*680mm
Material:	Powder coated steel structure
Operating:	Mechanical back adjustment
Back Section Raised From The Horizontal:	=75°
Drawer:	3 pcs
Mattress:	PU foam

ET-2

Obstetrics examination bed



PARAMETERS:	
Size:	1870*600*765 mm
Material:	Stainless steel
Operating:	Mechanical back adjustment
Back Section Raised From The Horizontal:	=75°
Bucket:	1 pcs
Mattress:	PU foam

CB-88A

Luxury ICU bridge



PARAMETERS:	
Length:	2000-3800mm
payload gliders:	100kg(220p)
Payload shelf:	60kg(110p)
Operating force(linear and horizontal):	<50N
Brake power(linear and horizontal):	<100N
Ceiling mount:	by two ceiling frames at raw ceiling
Ambient light:	2*54w
Reading /visitors light	220v, 2*15w LED spotlights
Standard configuration:	
Communication socket RJ45	1pcs
Column length:	700mm
Electrical socket(220V):	X 8pcs
Gas outlet(Germany standard)	O2x2,VACx1,AIRx1
Shelf x1,Drawer x1,basket x1,extension arm x1,infusion rack x2	
Optional item:	
1. 1-4pcs shelves (25x10/30x10mm); 2.Drawer layer:1/2	
Medical Gas Outlets Standards: optional	
British, German, French, Metric, Ohmeda, DISS, Chemetron, Purit-Bennett	
Electrical Sockets:customized as clients' request	

CB-88B

Medical ICU bridge



PARAMETERS:	
Length:	2000-3800mm
payload gliders:	100kg(220p)
Payload shelf:	60kg(110p)
Operating force(linear and horizontal):	<50N
Brake power(linear and horizontal):	<100N
Ceiling mount:	by two ceiling frames at raw ceiling
Ambient light:	2*54w
Reading /visitors light	220v, 2*15w LED spotlights
Standard configuration:	
Communication socket RJ45	1pcs
Column length:	700mm
Electrical socket(220V):	X 8pcs
Gas outlet(Germany standard)	O2x2,VACx1,AIRx1
Shelf x1,Drawer x1,basket x1,extension arm x1,infusion rack x2	
Optional item:	
1. 1-4pcs shelves (25x10/30x10mm); 2.Drawer layer:1/2	
Medical Gas Outlets Standards: optional	
British, German, French, Metric, Ohmeda, DISS, Chemetron, Purit-Bennett	
Electrical Sockets:customized as clients' request	



CP-66B

Single arm ceiling pendant



CP-66A

Double arm ceiling pendant

PARAMETERS:	
Double arm/Single arm	800mm+800mm/800mm
Column length	1000mm
Max.loading capacity	350kg
Arm rotating angle	340°
Braking system	Pneumatic braking
Standard configuration:	
Communication socket RJ45	1pcs
Shelf	2pcs
Electrical socket(220V):	X 6pcs
Gas outlet(Germany standard)	O2x1,VACx1,AIRx1
Drawer x1,basket x1,extension arm x1,infusion rack x1,IV pole rack x1	
Optional item:	
1-4pcs shelves (25x10/30x10mm):	
Medical Gas Outlets Standards: optional British, German, French, Metric, Ohmeda, DISS, Chemtron, Purit-Bennett	
Electrical Sockets: customized as clients' request	
Optional anesthesia, endoscopy and surgery pendant	



CP-99B

Electric ceiling pendant
single arm



CP-99A

Electric ceiling pendant
double arm

PARAMETERS:	
Double arm/Single arm	800mm+800mm/800mm
Column length	1000mm
Max.loading capacity	350kg
Arm rotating angle	340°
Braking system	Pneumatic braking
Electrical power	~220V,50Hz
System	Electrical
Standard configuration:	
Communication socket RJ45	1pcs
Shelf	3 pcs
Electrical socket(220V):	X 6pcs
Gas outlet(Germany standard)	O2x1,VACx1,AIRx1
Drawer x1,basket x1,extension arm x1,infusion rack x1,IV pole rack x1	
Optional item:	
1-4pcs shelves (25x10/30x10mm).	
Medical Gas Outlets Standards: optional	
British, German, French, Metric, Ohmeda, DISS, Chemetron, Purit-Bennett	
Electrical Sockets:customized as clients' request	
Optional anesthesia,endoscopy and surgery pendant	

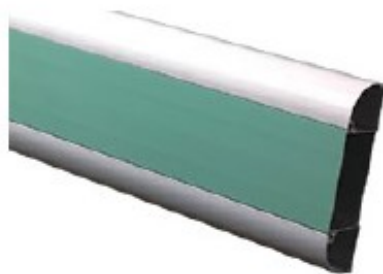
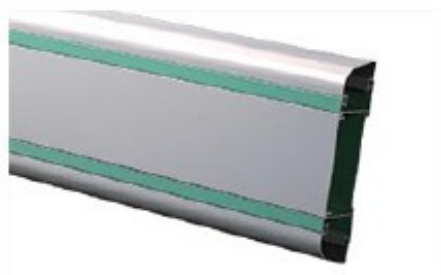


MEDICAL CEILING PENDANT



CC-11

Medical column



Bedhead unit

we customize it as your requirements

MPM-H

Multi-parameter patient monitor



- 12.1 inches high resolution color TFT screen
- User friendly and configurable interface design
- Intuitive human voice alarms
- Powerful data review:
 - 720 hours graphic and tabular trends of all parameters
 - 1000 pieces of NIBP record storage
 - 200 pieces of alarm review
- Built-in rechargeable Li-ion battery for up to 2 hours of continuous work
- VGA output for external display (optional)
- Wire/wireless central monitoring system solution (optional)

Standard Parameters: 3/5-lead ECG, PR, RESP, NIBP, SpO₂, TEMP
 Optional: 2-IBP, EtCO₂(sidestream), central monitoring system

MPM-E

Multi-parameter patient monitor



- 10.4 inches colorful high brightness liquid crystal display;
- Display the electrocardiograph wave, breathing wave and pulse/blood oxygen volume diagram on the same screen;
- Chinese display interface with built-in Chinese, English, French and Russian.



ICUB-H

Electric ICU bed
Size:2230x1050x700/450mm



ICUB-M

Electrical ICU bed
Size:2170x1080x850/500mm



ICUB-E

Electrical ICU bed
Size:2300x1050x710/530mm



HNB-H

Home nursing bed
Size:2230x980x695/295mm



LHB-5A

Electrical hospital bed
Size:2200x980x380/600mm



LHB-5B

Electrical hospital bed
Size:2180x1220x480/780mm



LHB-3A

Manual hospital bed
Size:2200x1010x400/750mm



LHB-3B

Manual hospital bed
Size:2200x980x380/600mm



LHB-2A

Manual hospital bed
Size:2200x2020x400mm



LHB-3C

Manual hospital bed
Size:2130x980x570/800mm



LHB-2B

Manual hospital bed
Size:2200x980x500mm



HB-E3A

Electrical hospital bed
Size:2200x950x380/600mm



HB-M3A

Manual hospital bed
Size:2200x950x380/600mm



HB-M3B

Manual hospital bed
Size:2150x900x460/760mm



HB-M2A

Manual hospital bed
Size:2200x950x530mm



HB-M2B

Manual hospital bed
Size:2150x900x500mm

**HB-M2C**

Manual hospital bed
Size:2150x900x500mm

**HB-1**

Manual hospital bed
Size:2150x950x500mm

**HB-2**

Hospital bed
Size:2150x900x500mm

**HB-3**

Manual hospital bed
Size:2150x900x500mm

**HB-4**

Hospital bed
Size:2150x900x500mm

**HB-5**

Manual hospital bed
Size:2030x900x500mm

**HB-6**

Stainless steel hospital bed
Size: 2030x900x500mm

**HB-7**

Steel coating manual hospital bed
Size: 2030x900x500mm

**HB-8**

Steel coating hospital bed
Size: 2030x900x500mm

**HB-9**

Tranction hospital bed
Size: 2150x900x500mm

**CHB-1**

Steel coating children bed
Size: 1600x850x550mm

**CHB-2**

Hospital children nursing bed
Size: 1770x900x550mm



CHB-3

Hospital manual children bed
Size:1770x900x550mm



MFT-1

Mobile overbed table
Size:750x400x860/1220mm



MFT-2

Overbed food table
Size:750x400x860/1220mm



MFT-4

ABS food table



MFT-3

ABS food table fixed in bed



AG-3

Luxury accompany chair



BC-1

ABS bedside cabinet
Size:470x480x750mm



BC-2

ABS bedside cabinet
Size:470x480x760mm



BC-3

Bedside cabinet
Size:500x500x700mm



BC-4

Bedside cabinet
Size:460x470x795mm



M1

Waterproof cloth mattress
with foam and palm



M2

Leather mattress with
foam and palm



M3

Luxury leather mattress
with foam



M4

Air mattress



AC-1

Stainless steel accompany chair
Size: 1859x450x900mm



AC-2

Steel coating accompany chair
Size: 1859x450x900mm



XV-I

New X-ray view box



XV-II

New X-ray view box



XV-III

New X-ray view box



LEDXV-I

LED X-ray view box



LEDXV-II

LED X-ray view box

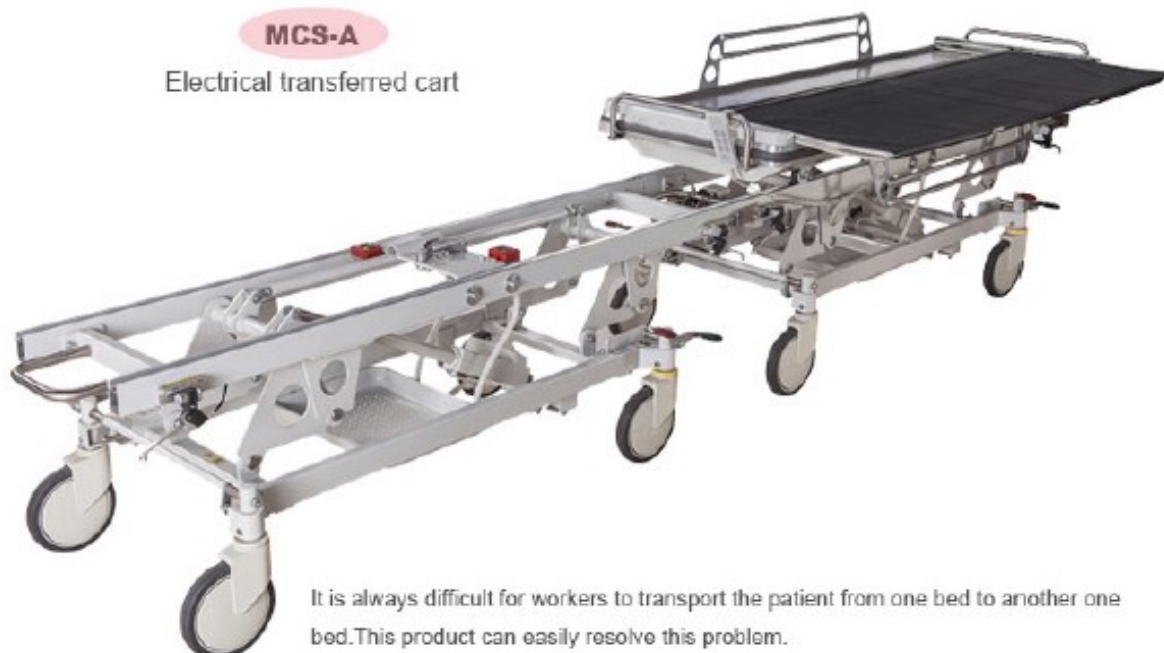


LEDXV-III

LED X-ray view box

MCS-A

Electrical transferred cart



It is always difficult for workers to transport the patient from one bed to another one bed. This product can easily resolve this problem.

The Main Characteristics:

- * The unique design, The patient will be automatically transferred to another bed via electrical controller, It reduce the crashes and doctors's labour force;
 - * This cart is butted design, electrical lifting up&down, bidirectional butted which keep the ICU and Operation room clean. Imj ported 3 grades castors, reliable and flexible ;
 - * Accessory
- IV Stand : 1pcs Hand controller : 1pcs Power coil: 1pcs connecting line: 1pcs

Main Specification:

Surface Measures(LxW): 2020mm x680mm
 Transfer Range of Up and Down: 590mm-880mm
 Transfer Distance of Panel: 510mm
 Weight of equipment: 242kgs
 Maximum loadage: 135kgs
 Storage Battery: (12V, 13AH)
 X2PCS Power wire: AC220V/110V, 50HZ/60HZ



MCS-B

Medical connecting stretcher



- *Main frame of the cart is high quality aluminum alloy with one time molding;
- *Connecting rail adopted high quality aluminum alloy,making the bed surface sliding more steady and stable;
- *Height of two carts can be adjusted independently.Bed surface can slip smoothly between them when they are lifted to same level;
- *It will be lock automatically when the bed surface moves to the end of one cart with safety device to avoid bed surface sliding;
- *With central control braking wheels,it is more steady;
- *Either cart use advanced central control braking system,more reliable and stable when moving and connecting;
- *Its performance and structure come to the international advanced level,can satisfy the requirement of the hospital operation room;
- *Size:3900x600x650/950mm

MES-1

Medical hydraulic stretcher



- * Size: 212x80x63/93cm
- * Bed base angle position adjustable:
 - Back section panel 0~75°
 - Leg section panel 0~45°
 - Tredelenburg 0~15°
 - Anti-trendelenburg 0~15°
- * Max. loading weight: 250kg
- * Diameter of centrally control silent and dustproof castor
- * Two separate hydraulic pump
- * Hydraulic control panel
- * Updown lifting guide wheel
- * Mattress(optional) * I.V.pole * CPR
- * Aluminum alloy side rail
- * Back rest may X-ray(electric panel made in America)
- * Top coat: electrostatic powder coating)
- Bed frame: cold-rolled steel tube)

Features:

1. It is a type of manual transfer stretcher. Turn by deasil, the stretcher will be up, and turn by widdershins, the stretcher will be down;
2. Aluminum-Alloy protective rails, can be folded and hidden under the surface on no use;
3. Central-lock castors, diameter 150mm. Matched with direction castor, help the operator controlling the direction easily;
4. Rotate the crand and handle on bedboard, patient on the mattress can be moved parallelly to another bed or flat table;



MES-2

Medical transfer cart



MES-4

Manual stretcher

- * Size: 1950×650×550/950mm
- * The main feame structure of flat carrier adopts the high-quality aluminum alloy of international A380.2 with molding in dies; it is beautiful and firm for its appearance.
- * The fat carrier surface and its guardrail adopt the imported PE material for one-step molding, it is beautiful and firm.
- * The flat carrier surface is the detached design, the upper part adopt the high quality damper as the source of force for support and it is easy for operation.
- * The crank handle of flat carrier (the screw lever is equipped with engaging and disengaging gear) can adjust the height of flat carrier surface and its height is 500/900mm.
- * The flat carrier adopt the international advanced central-brake system, it is stable and reliable the universal/directional castors are configured, so one person can be easy to operate.
- * From the overall design and manufacture, the flat carrier can satisfy your requirement with more humanization, it is the ideal choice in hospital for carrying patients.
- * This model can be made electrical.



MES-5
Stainless steel medical stretcher
Size: 1860x590x700mm



MWT-1
Mobile work station
Size: 730x470x910mm



MET-2
Emergency trolley
Size: 630x470x910mm



MET-1
Emergency trolley
Size: 730x470x910mm



MET-3
Emergency trolley



MAT-1
Anesthesia cart
Size: 630x470x1500mm



A

MAT-2

Anesthesia cart

Size:850x520x950mm



B



A

MMT-1

Medicine trolley

Size:



B



MMT-3

Medicine trolley

Size:600x470x920mm



MMT-4

Medicine trolley

Size:570x370x787mm



MMT-5

Medicine trolley

Size:600x420x885mm



MTT-3

Infusion trolley

Size:775x635x1080mm



MTT-1

Infusion trolley

Size:630x470x910mm



MTT-2

Infusion trolley

Size:630x470x910mm



MRT-50

Medical files cart

Size:820x390x880mm



MRT-25

Medical files cart

Size:510x390x780mm



MBT-1

ABS baby cart

It has weighing, music play and ambient temperature display



MBT-2

Steel coating baby cart

Size: 840x530x920mm



MBT-3

Stainless steel baby cot

Size: 920x490x1020mm



MNT-2

Medical dirty carts

Size: 1185x570x950mm



MNT-3

Medical dirt trolley

Size: 800x590x890mm



MNT-4

Medical dirt bucket

Size: 570x430x890mm



MNT-5

Stainless steel dirt trolley

Size: 945x450x810mm



MNT-6

Stainless steel dirt trolley

Size: 795x600x910mm



MT-1

Stainless steel instrument trolley

Size: 750x450x850mm



MT-2

Stainless steel instrument cart
Size: 750x450x850mm



MT-3

Stainless steel instrument cart
Size: 750x450x850mm



MT-4

Stainless steel instrument cart
Size: 1400x450x800mm big
1400x460x920mm small



MT-5

Stainless steel instrument cart
Size: 750x450x910mm big
670x450x910mm small



MT-6

Medical instrument cart
Size: 640x430x930mm



MT-7

Medical nursing trolley
Size: 610x410x830mm



MT-8

Medical instrument trolley
Size: 675x600x1415mm



MT-9

Medical treatment trolley
Size: 1120x490x995mm



MT-10

Medical trolley for sending goods
Size: 1100x520x930mm



MT-11

Stainless steel mayo trolley
Size: 555x450x940/1200mm



MT-12

Stainless steel instrument trolley



MT-13

Stainless steel apparatus trolley with power socket
Size: 650x550x890mm



MC-10

Sterile cabinet with stainless steel fundation
Size: 900x400x1750mm



MEB-1A

Stainless steel examination bed
Size: 1950x650x650mm



MEB-1B

Steel coating examination bed
Size: 1950x650x650mm



MEB-2

Steel coating examination bed
Size: 1990x650x680mm



MEB-3

Stainless steel examination bed
Size: 1800x600x600mm



C-1

Stainless steel lifting stool
Size: dia340x750/620mm



C-2

Chromed lifting stool
Size: dia320x460/620mm



C-3

Chromed lifting stool
Size: dia320x430/590mm



C-4

Luxury waiting chair



IC-1A

Stainless steel infusion chair
Size: 1200x620x1030mm



F-A

Steel coating footstep
Size: 620x380x420mm



F-B

Stainless steel footstep
Size: 540x400x400mm



IC-1B

Steel coating infusion chair
Size: 1200x620x1030mm



IC-2

Steel coating Infusion chair
Size:700x850x1100mm



IC-3

Luxury Infusion chair



IV

Stainless steel IV Stand



FS-3

Stainless steel folding screen
Size: 1910x1800mm



S-2

Scale
160kg



S-1

Scale
160kg



S-3

Baby scale
20kg



S-4

Baby scale
20kg



POT-1

Stainless steel electrical
pet operation table



MS-1

Stainless steel basin sink
with sensor
Size:1600x620x1900mm



POT-5

Hydraulic pet operation table



POT-6

Hydraulic pet operation table



POT-11

Pet beauty table



PBS-1

Pet bath sink



PBS-2

Pet bath sink



PC-2

Pet cage



BET-1

Hydraulic pet beauty table



BET-3

Pet beauty table



BET-2

Pet beauty table

Product colors in the catalogue may vary from actual products due to photography and printing. Please take actual produce as standard when purchasing. Please refer to actual products for standard specifications. Products specifications subject to change without notice



AGS-Medical

Ph: 505-550-6501 & 505-565-5102, Fx: 505-814-5778
Em: sales@agsmedical.com, Web://www.agsmedical.com

